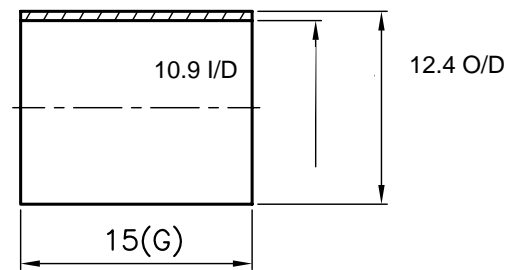
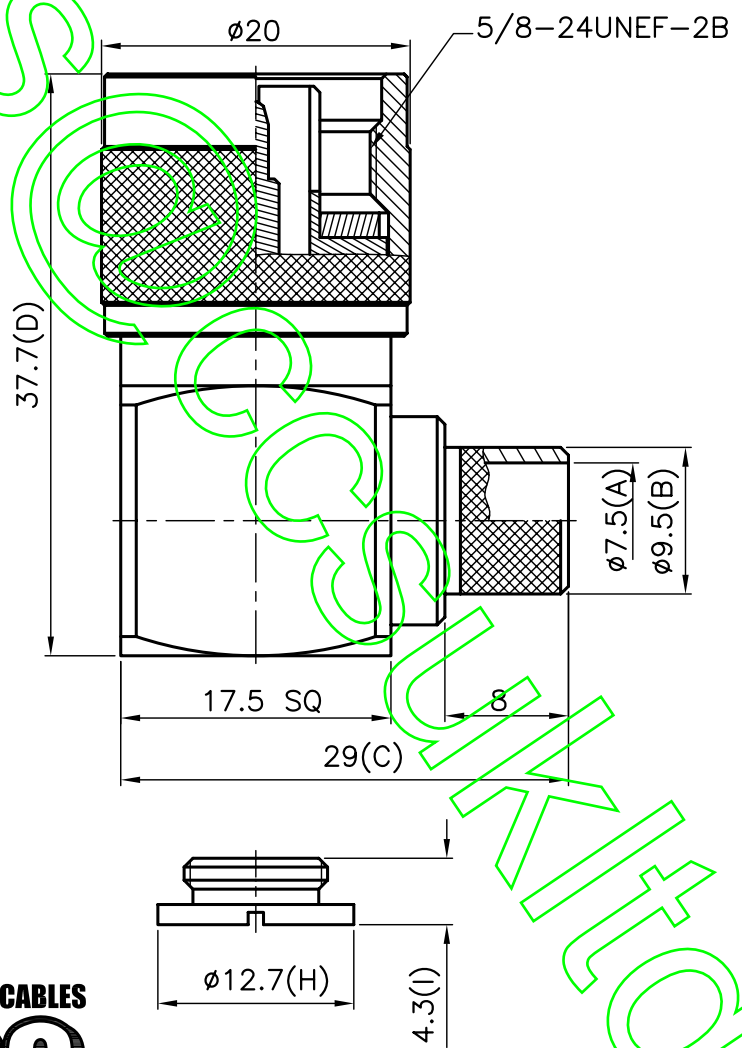


REVISIONS		
ISS	DESCRIPTION	DATE

RoHS COMPLIANT



TITLE: N MALE RIGHT ANGLE CRIMP  
(FOR RG214, LMR 400)

PART NO: NPRACS213

DRAWING NO:

APRD:	UNLESS OTHERWISE SPECIFIED TOLERANCES 0.5-6 = ±0.2 >6-30 = ±0.4 >30-120 = ±0.6 >120-315 = ±1 >315-1000 = ±1.6 ANGLES = ±5°				
CHKD:		COVER	BRASS	NICKEL	KA/2005/10527\ KA/2005/60362
DR:		FERRULE	BRASS	NICKEL	KA/2005/10527\ KA/2005/60362
DATE: 08/14/06"		SHELL	BRASS	NICKEL	KA/2005/10527\ KA/2005/60362
	UNIT: mm	CONTACT PIN	BRASS	GOLD	KA/2005/10527\ KA/2005/30993
	SCALE: 2/1	INSULATOR	TEFLON	WHITE	KA/2005/50918
SHEET: .		BODY	BRASS	NICKEL	KA/2005/10527\ KA/2005/60362
		NO. DESCRIPTION	MATERIAL	FINISH	SGS REPORT NO